

## Konfigurationsanleitung Winaxe 7.6

Installation der Lizenzdatei (englisch) Seite 1

Konfiguration Seite 2

### Installation der Lizenzdatei (englisch)

#### Three ways to install your license file, xwpdllid.dll:

First of all you need to have version **7.6** of WinaXe, released June 2008. If you don't have it, please download winaxe76.exe from [LabF.com](#) or [from mirror](#).

Please, do not try to install the license file on top of any other version.

#### A) If you have WinaXe 7.6 installed on your PC already:

1. Download and save the license file [xwpdllid.dll](#) into the program installation directory (default is C:\Program Files\LabF.com\WinaXe). With this new file you should replace the existing evaluation file that has the same name. (If you have some application associated with .dll extensions, you might need to right click on the link and select "Save as..." from the menu.)

#### B) If you do NOT have any version of WinaXe installed on your PC yet:

1. Download and unzip WinaXe 7.6 evaluation version, but in the first Win Zip Self Extractor dialog screen please remember to disable "When Done Unzipping Run: SETUP.EXE"-option.

2. Download and save the license file [xwpdllid.dll](#) to same directory where you just stored WinaXe's installation files (default is [c:\xinstall](#)). With this new file you should replace the existing evaluation file that has the same name. (If you have some application associated with .dll extensions, you might need to right click on the link and select "Save as..." from the menu.)

3. Install WinaXe (open/run [c:\xinstall\setup.exe](#))

#### C) If you are upgrading from a previous version and wish to keep your settings

1. Create a temporary folder (like "[c:\userfiles](#)") and save all files having extensions .dat (if exist), .ini, .kmf (edited by user), .su (edited by user), export.us and other files created by user in the WinaXe home directory of the previous version. Very easy way to copy the correct files is to open the home directory (default C:\Program Files\LabF.com\WinaXe) and sort the files by date. Then simply copy the files that were changed/created during the installation or later. It is important **not to move** the files but **only copy** them. Otherwise the uninstall will fail.

2. Uninstall the previous version of WinaXe (Start -> Programs -> WinaXe -> Uninstall)

3. Download [WinaXe 7.6](#) evaluation version.

4. Install the new WinaXe to the same location with the previous uninstalled version. (if you change the location of the new version, you should edit the font path in the xwp.ini file(s) to point to location of the font directory).

5. Copy all stored user files from the temporary folder (here "[c:\userfiles](#)") into the WinaXe home directory (edit the font path in the "xwp.ini" file(s) if you changed the installation location)

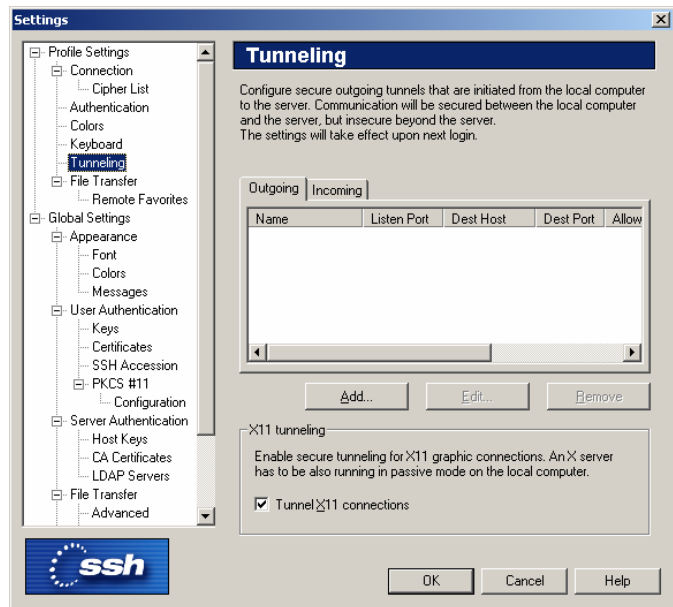
6. Download and save the license file [xwpdllid.dll](#) into the program installation directory (default is C:\Program Files\LabF.com\WinaXe). With this new file you should replace the existing evaluation file that has the same name. (If you have some application associated with .dll extensions, you might need to right click on the link and select "Save as..." from the menu.)

## Konfiguration

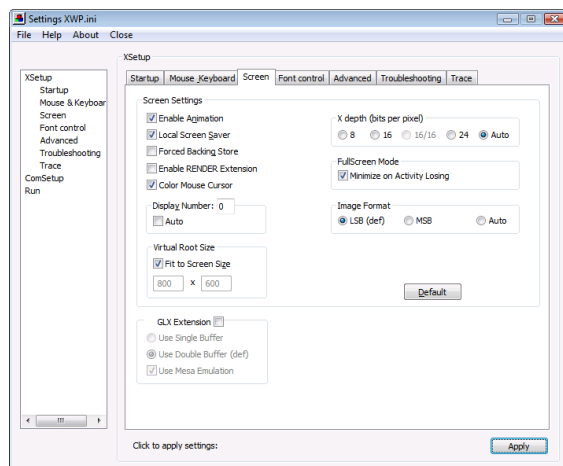
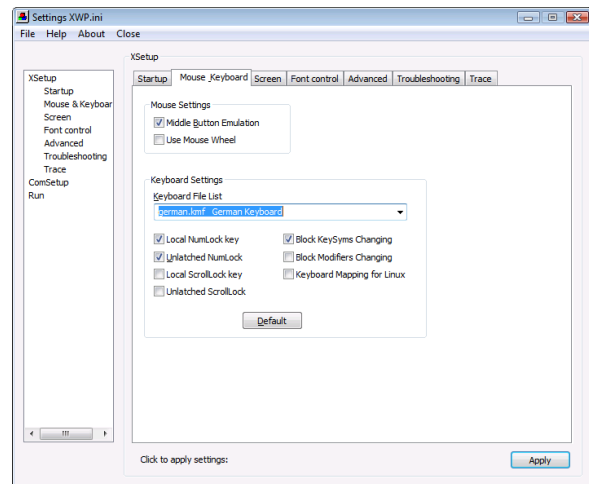
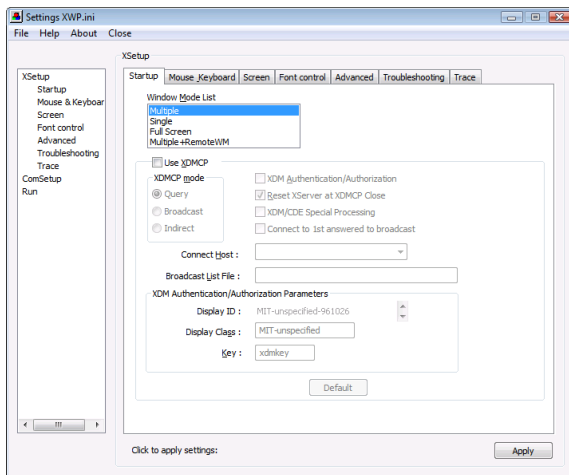
SSH installieren, und X11  
Tunnelling aktivieren:

Mit ssh auf z.B.  
login.server.uni-frankfurt.de  
verbinden

„export DISPLAY=mein.Rechner.uni-  
frankfurt.de:0.0“ auf Befehlszeile  
eintippen, wobei jeweils der eigene  
Rechnername eingetragen werden  
muss



Winaxe Settings:



Die Registerkarten „Font-Control“, „Advanced“, „Troubleshooting“ und „Trace“ auf Standardeinstellungen belassen (im Zweifelsfall auf „Default“ klicken um Standardeinstellungen zu laden)

Die Punkte „ComSetup“ und „Run“ (linke Seite) ebenfalls auf Standard belassen.