



How to set up devices for the use of university Wi-Fi networks

- only for members of Goethe University Frankfurt am Main -

Version 1.4

Contents

- Windows 3
 - Goethe-PEAP 3
 - Manuel version..... 6
- Mac OSX14
 - Configuration file.....14
- Linux.....19
 - Manuel version.....19
- iOS20
 - Configuration file.....20
- Android24
 - Android 13 and lower (geteduroam)24
 - Manuel installation / Android 14.....27
 - FLUGHAFEN.....30
- QR-Codes31
 - Goethe-PEAP.exe31
 - iOS- / Mac OSX- Configuration file31
 - Android geteduroam.....31

Windows

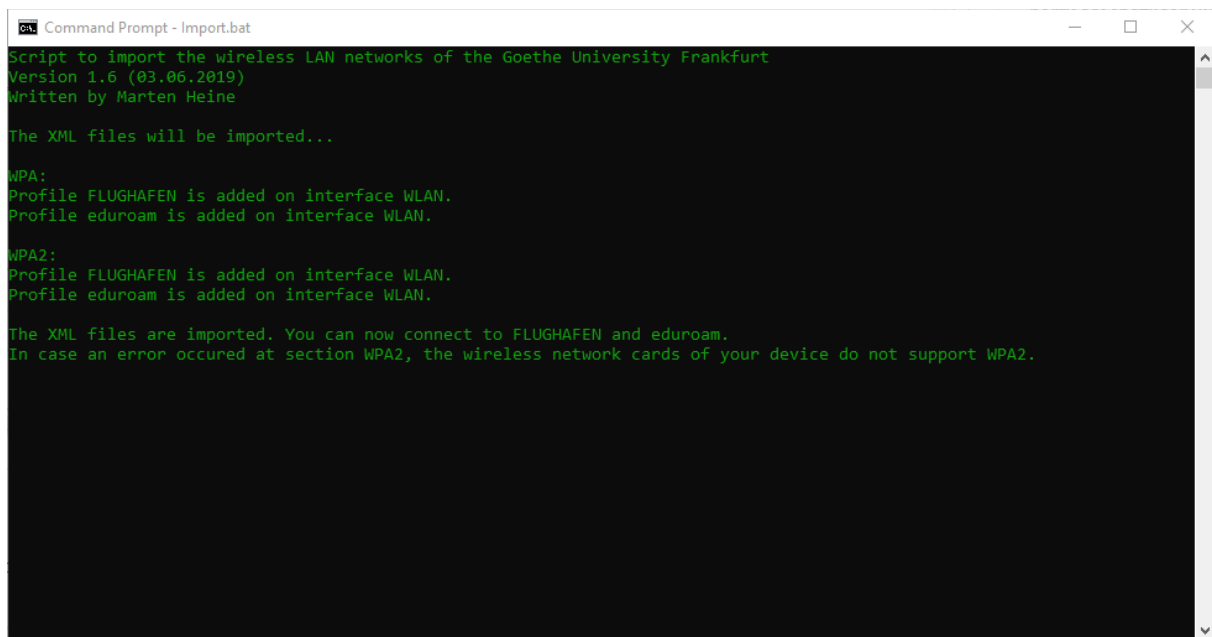
You have two options for setting up eduroam on a Windows system:

[Goethe-PEAP](#)

[Manuel version](#)

Goethe-PEAP

- Download [Goethe-PEAP.exe](#) and run it.
- Then the script starts and installs the Wi-Fi networks “FLUGHAFEN” and “eduroam”.



```
Command Prompt - Import.bat
Script to import the wireless LAN networks of the Goethe University Frankfurt
Version 1.6 (03.06.2019)
Written by Marten Heine

The XML files will be imported...

WPA:
Profile FLUGHAFEN is added on interface WLAN.
Profile eduroam is added on interface WLAN.

WPA2:
Profile FLUGHAFEN is added on interface WLAN.
Profile eduroam is added on interface WLAN.

The XML files are imported. You can now connect to FLUGHAFEN and eduroam.
In case an error occurred at section WPA2, the wireless network cards of your device do not support WPA2.
```

Figure 1 Win PEAP-Script

- Now join eduroam

You can usually do this at the bottom right of the screen. For Windows 10, click one of the icons shown below. For other versions of Windows, the icons are similar.



Figure 2 Win 10 WI-FI symbol without ethernet

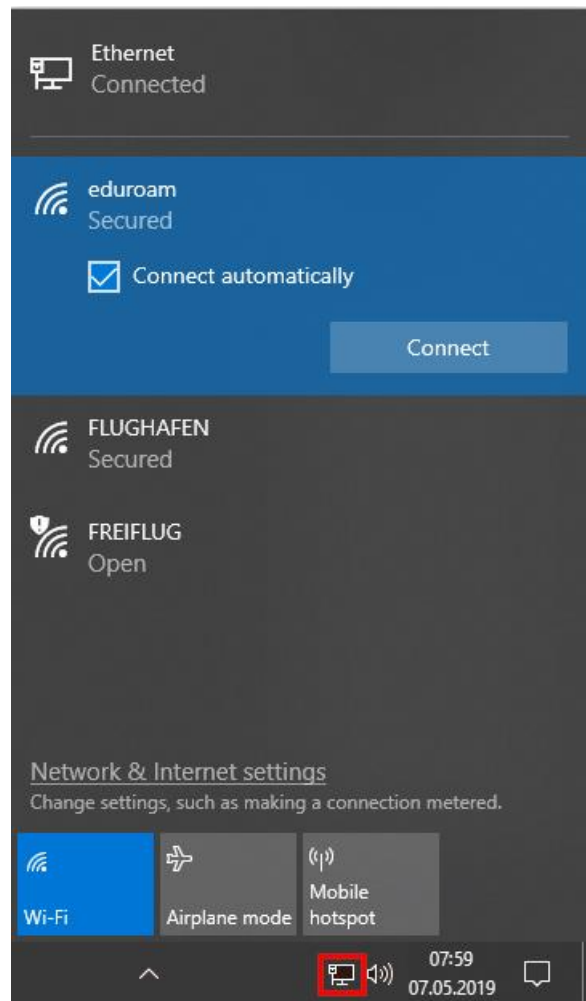


Figure 3 Win 10 WI-FI symbol with ethernet

- Finally, enter your user credentials:

User Name: <HRZ-Account>@uni-frankfurt.de

Password: <HRZ-Password>

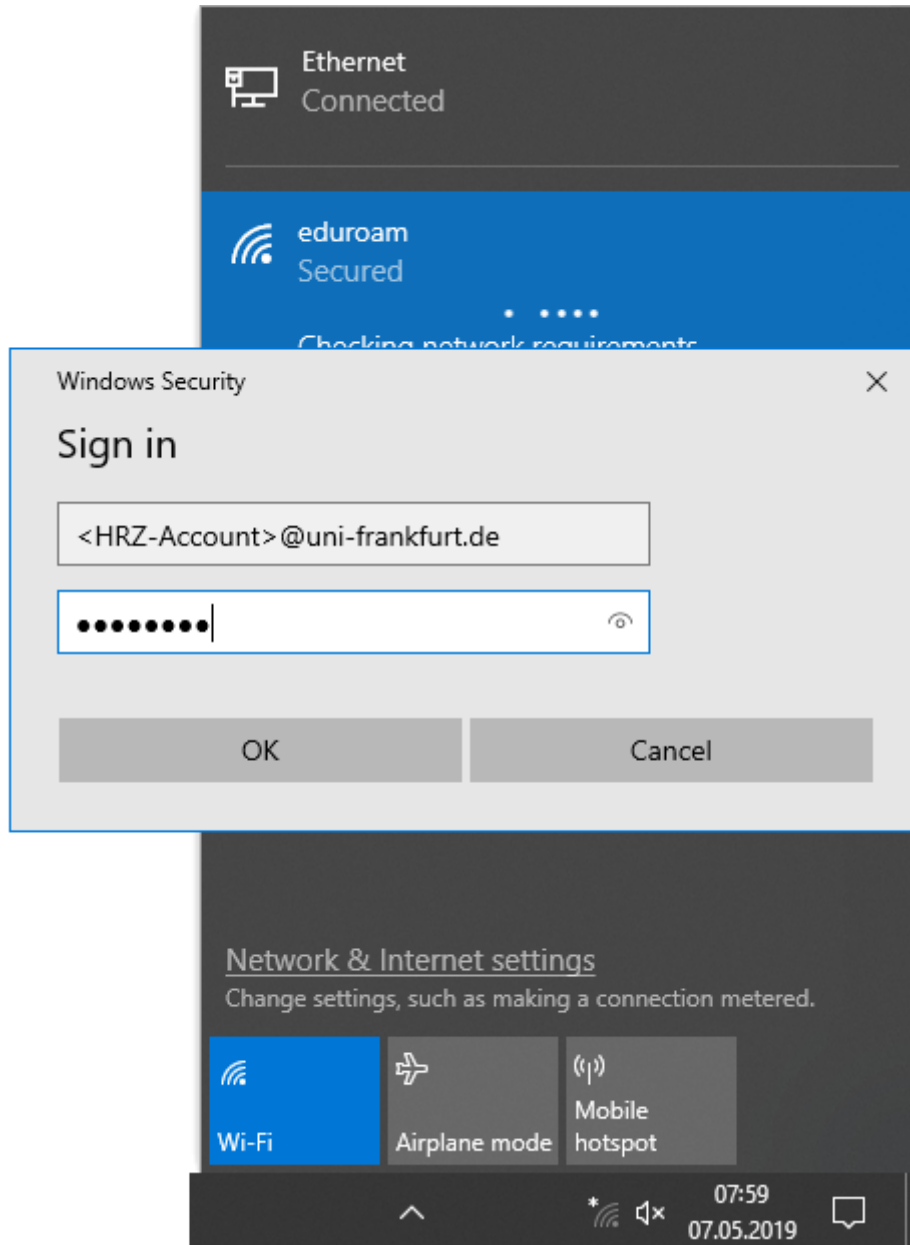


Figure 4 Win 10 WI-FI user credentials

Manuel version

In the various versions of Windows, the way to manually setting up a wireless network differs. This is shown as an example on Windows 10. In the gray box you will find the way for Windows 7.

Windows 7:

Control Panel

⇒ View network status and tasks

⇒ Manage wireless networks

⇒ Add

⇒ Manually create a network profile

Windows 10:

- In the “Network and Internet settings”, click "Network and Sharing Center".

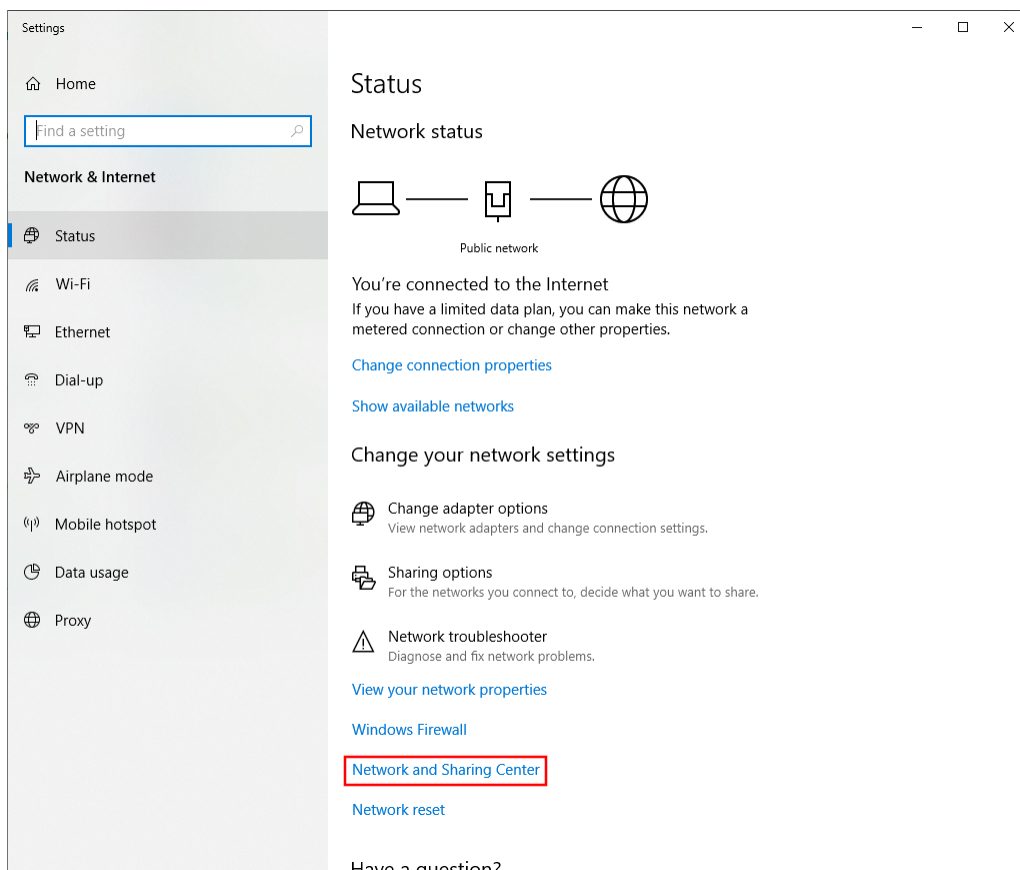


Figure 5 Win 10 Network and Internet settings

- There you click on “Set up a new connection or network”.

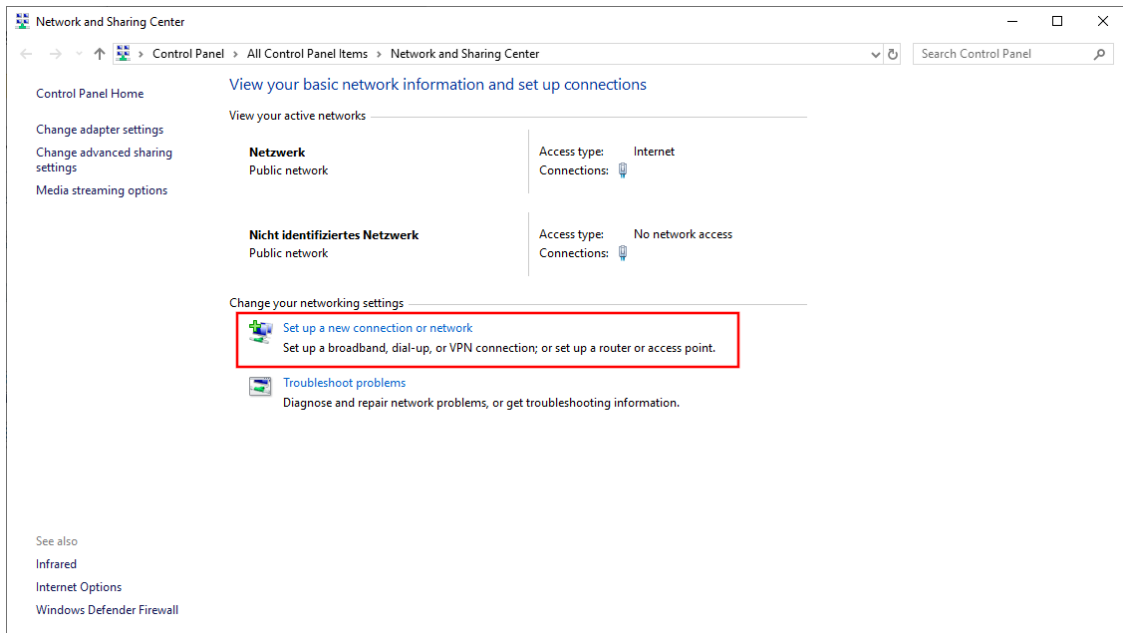


Figure 6 Win 10 Network and Sharing Center

- Now select “Manually connect to a wireless network”.

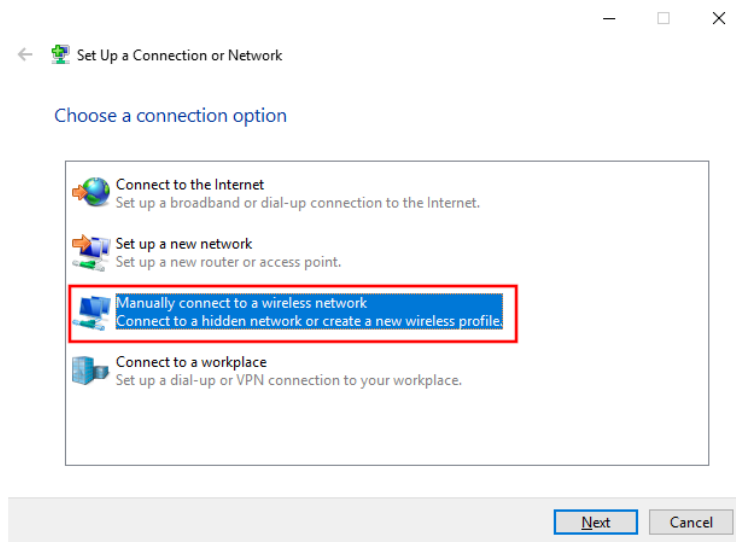


Figure 7 Win 10 New Connection or Network

- Enter the Network name and Security type and then click “Next”.

Network name: eduroam
Security type: WPA2-Enterprise

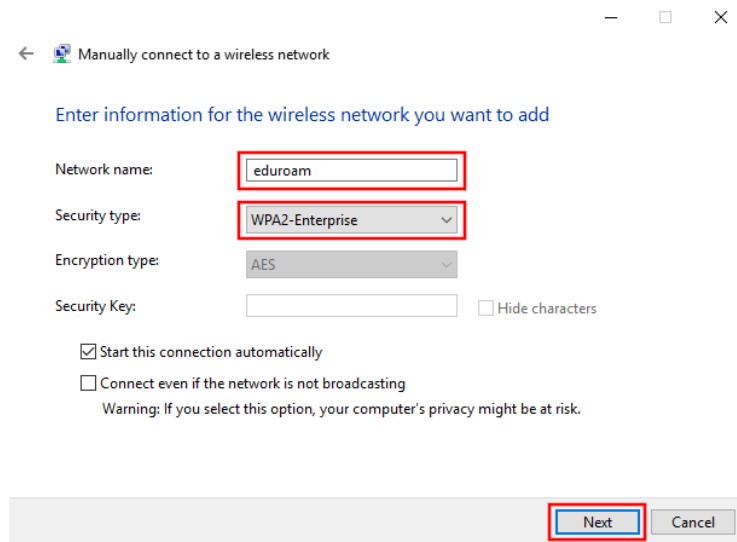


Figure 8 Win Manually connect to a wireless network

- Click on “Change connection settings”.

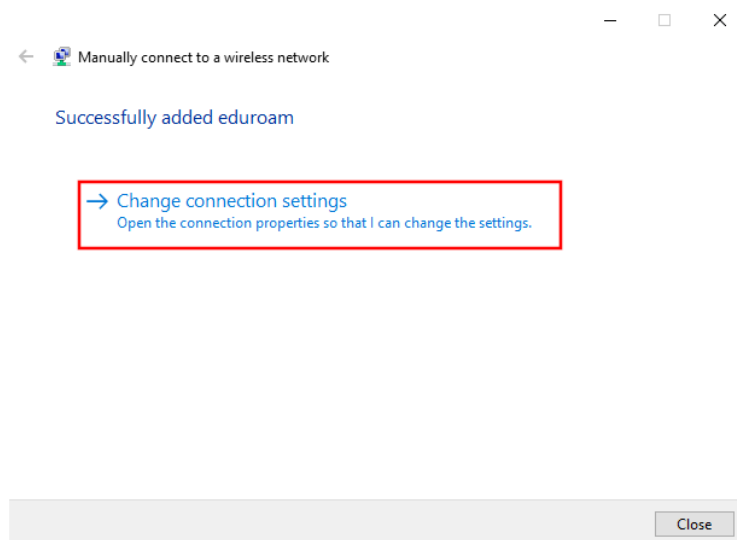


Figure 9 Win Wireless network created

- Select “Microsoft: Protected EAP (PEAP)” and open „Settings“.

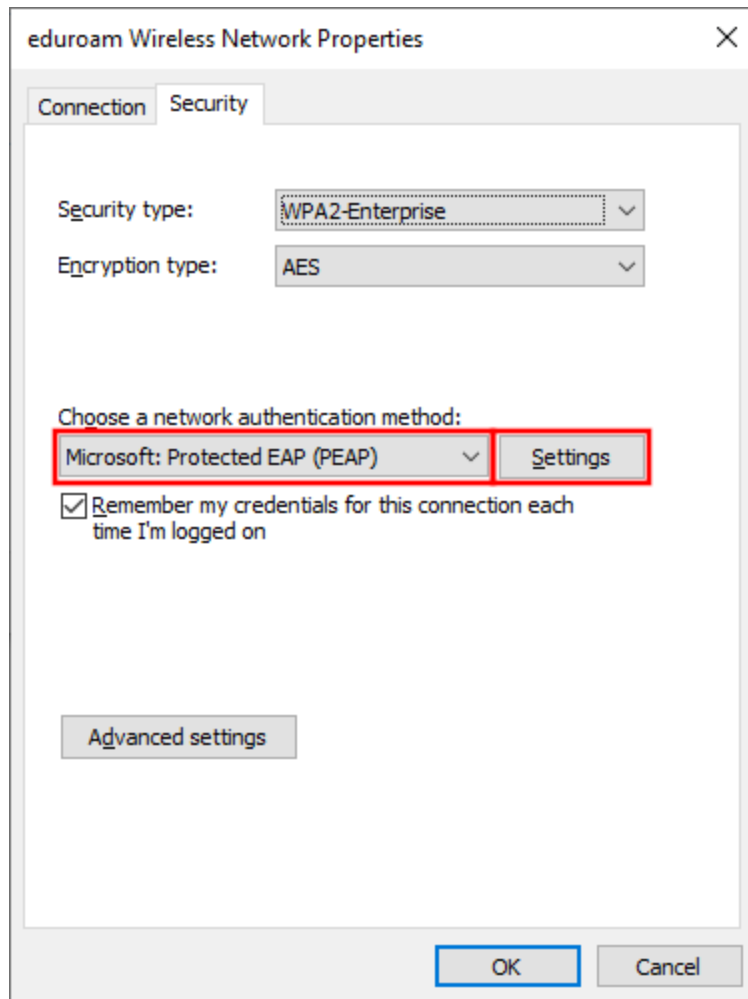


Figure 10 Win Properties wireless network

- Enable “Verify the server’s identity by validation the certificate”.
- Select “Connect to the these servers” and enter the following:
(the whole red text must be in one line, remove any line breaks)

firlefanfanz.server.uni-frankfurt.de;doppelterdohmen.server.uni-frankfurt.de;scheppekraus.server.uni-frankfurt.de;unsermannauseinoed.server.uni-frankfurt.de;herrkonzausberg.server.uni-frankfurt.de;schaedelharry.server.uni-frankfurt.de;tankstellencaio.server.uni-frankfurt.de;radius.server.uni-frankfurt.de

- Select “Trusted Root Certification Authorities” “USERTrust RSA Certification Authority” and “T-TeleSec GlobalRoot Class 2”.
- Enable “Enable Identity Privacy” and enter **eduroam**.
- Click “Configure”.

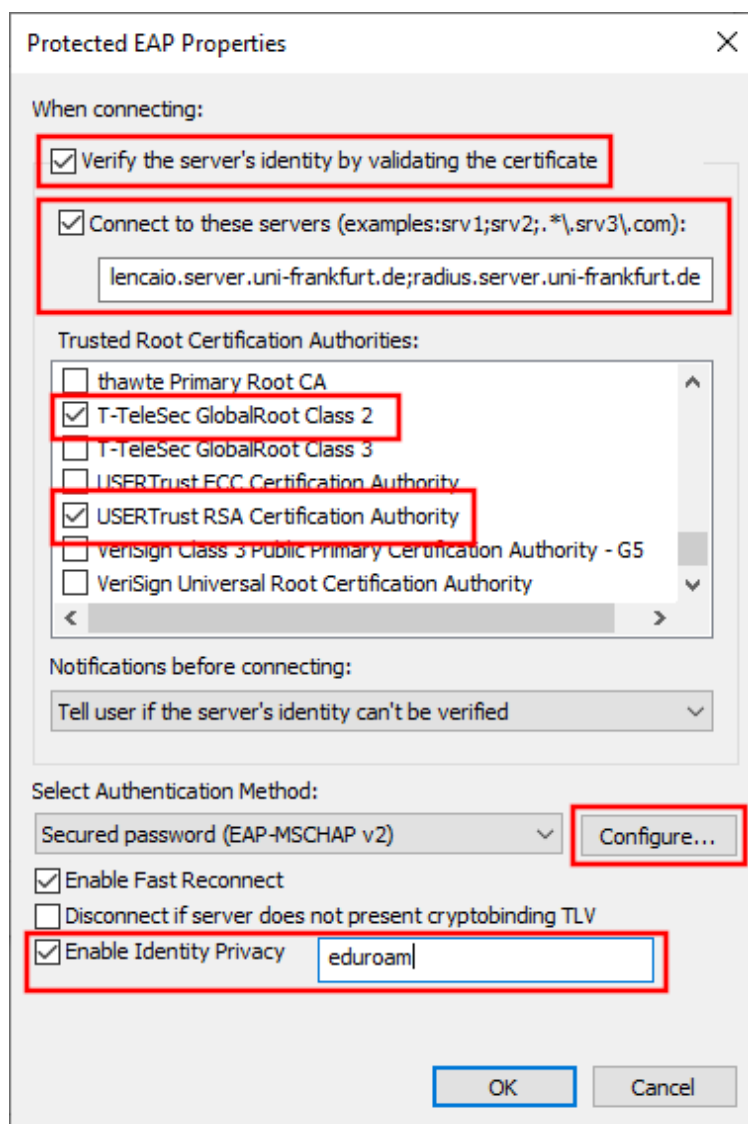


Figure 11 Win Properties of Protected EAP

- Make sure that the option in window Figure 12 is not selected. After that you can close both windows with “OK”.

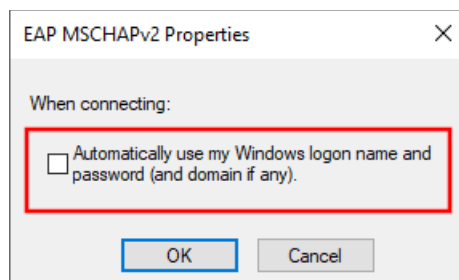


Figure 12 Win MSCHAPv2 Properties

- In the window (Figure 13) open the “Advanced settings”. In the new window (Figure 14) choose as the authentication mode “User authentication”.

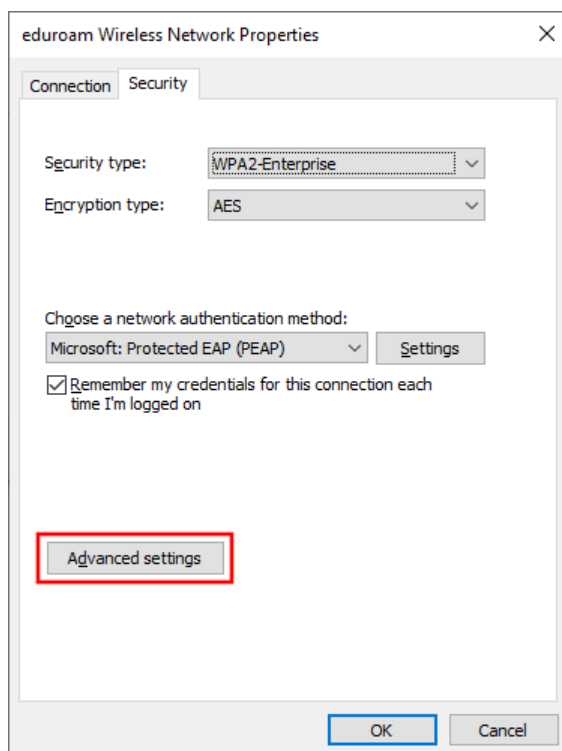


Figure 13 Win Properties wireless network

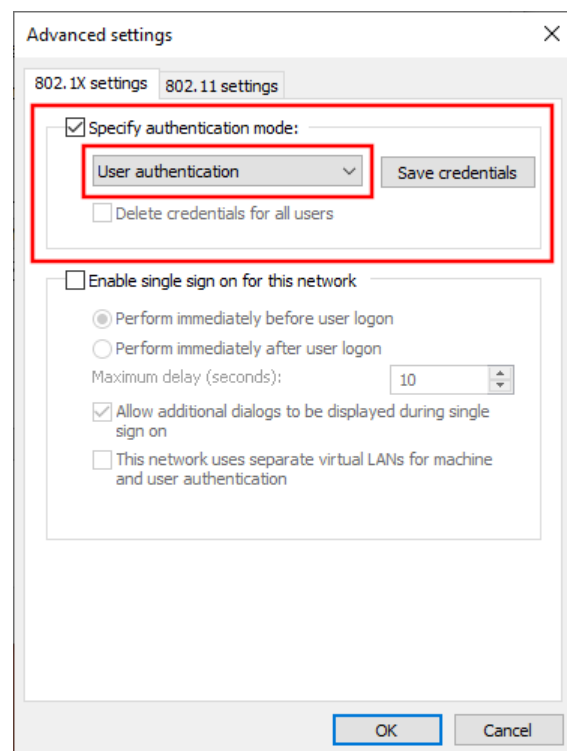


Figure 14 Win Advanced settings

- You can close all windows with “OK”.

- Now join eduroam

You can usually do this at the bottom right of the screen. For Windows 10, click one of the icons shown below. For other versions of Windows, the icons are similar.



Figure 15 Win 10 WI-FI symbol without ethernet

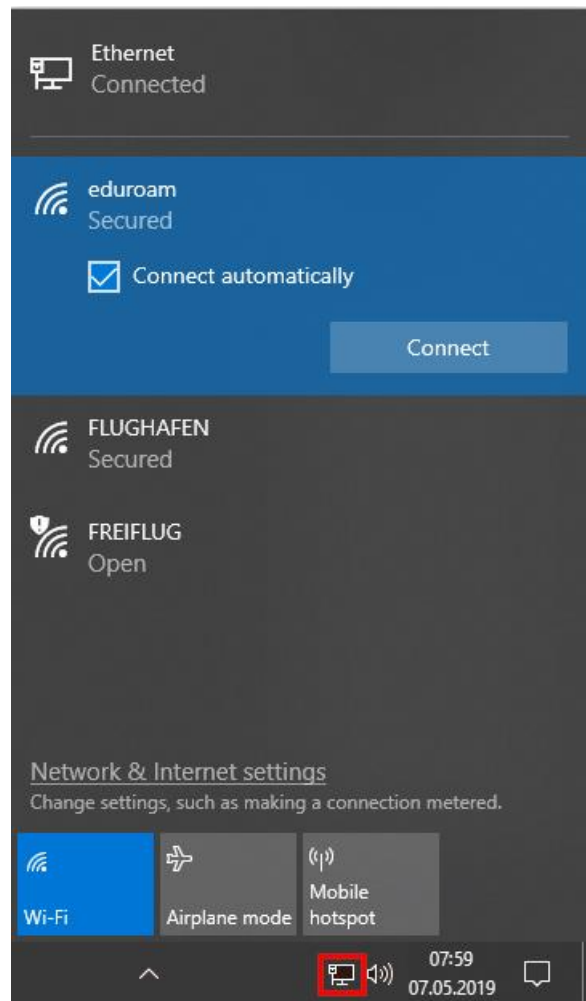


Figure 16 Win 10 WI-FI symbol with ethernet

- Finally, enter your user credentials:

User Name: <HRZ-Account>@uni-frankfurt.de

Password: <HRZ-Password>

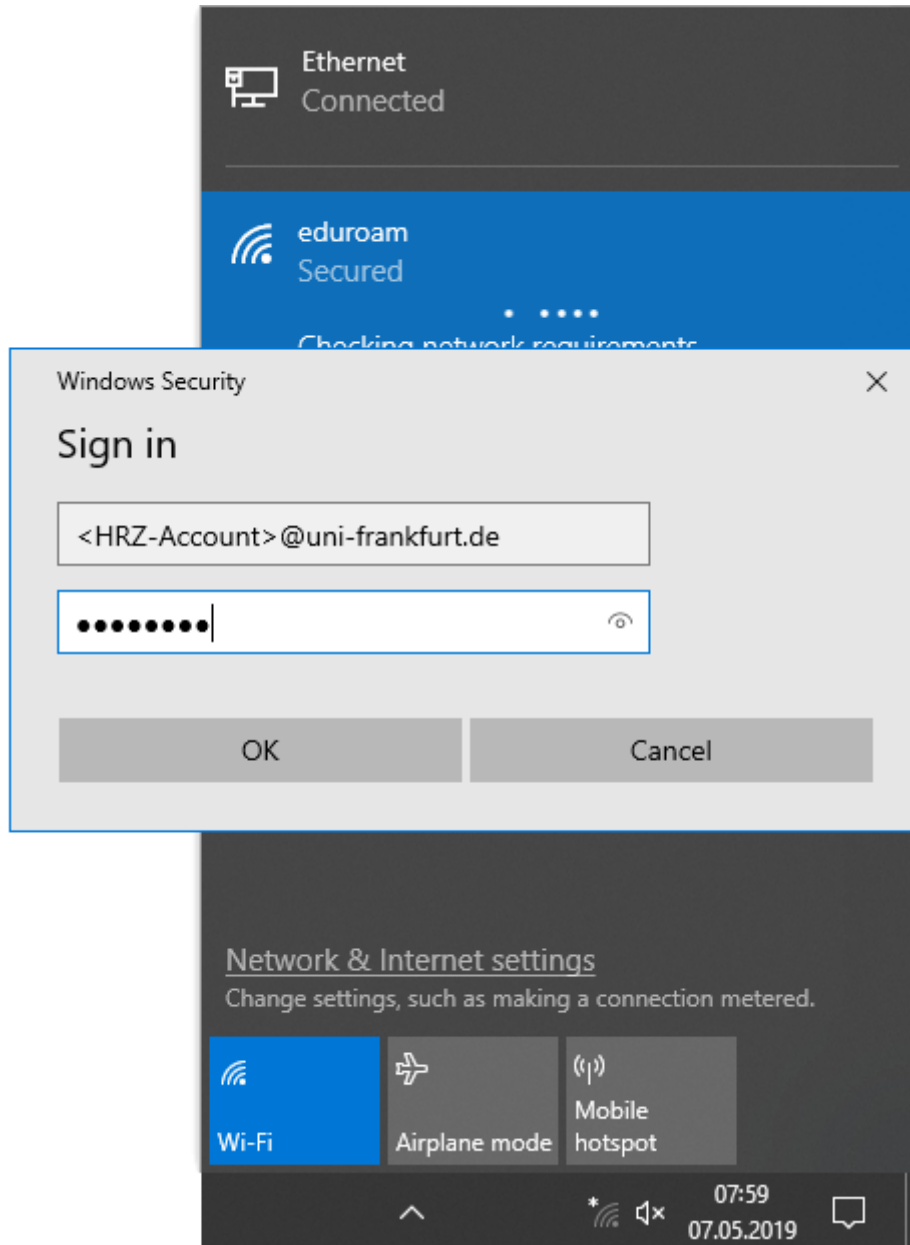


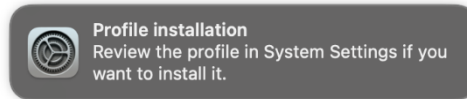
Figure 17 Win 10 WI-FI user credentials

Mac OS X

This guide is based on macOS Sonoma (14.2). There were minimal differences in older versions.

Configuration file

- Load and open the configuration file [Goethe-Uni-FFM-Wifi.mobileconfig](#).



- Go to “System Settings” and under “Privacy & Security” open “Profiles”.

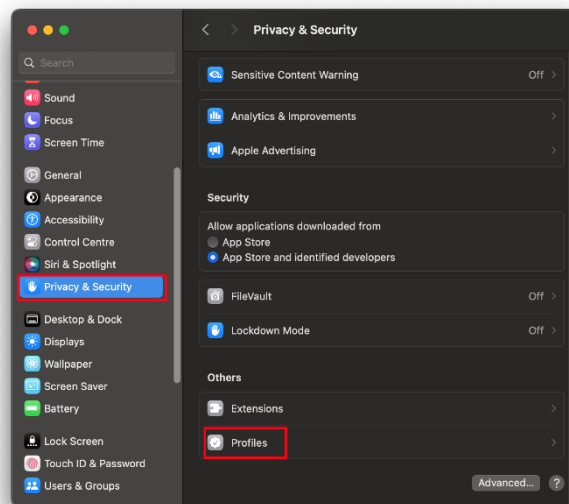


Figure 18 macOS Profiles

- Double-click the new profile.

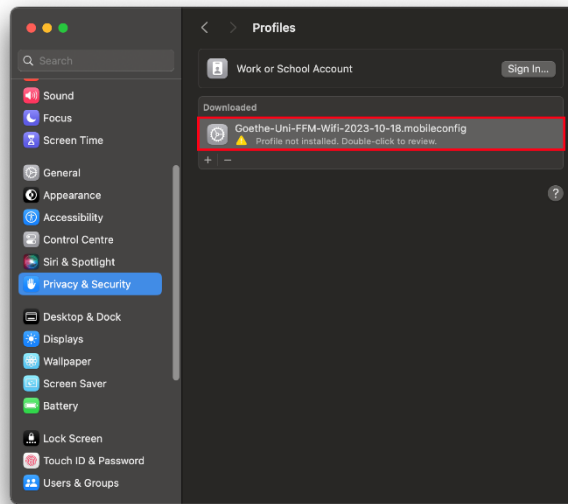


Figure 19 macOS Profile review

- Make sure that the profile is signed by the “Johann Wolfgang Goethe-Universität Frankfurt am Main SdÖR” and then click on “Install”.

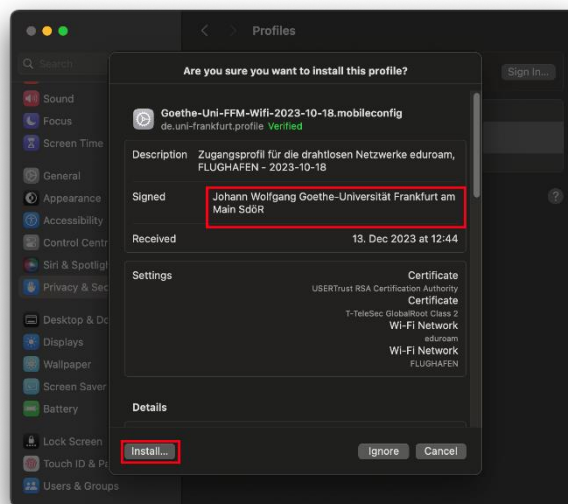


Figure 20 macOS Profile signature

- Confirm with “Continue” in the next window.

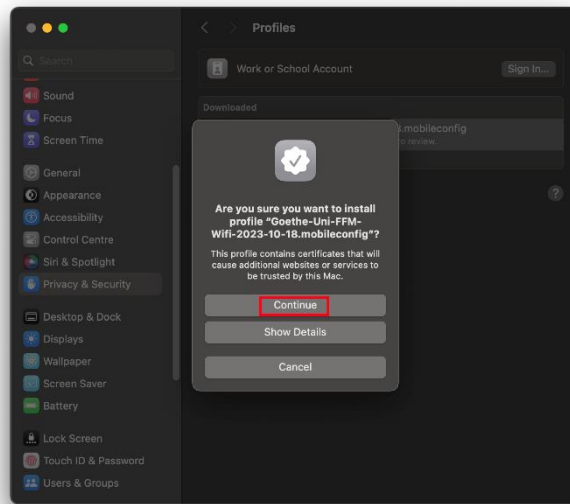


Figure 21 macOS Profile security question

- Enter your user credentials and click “Next” / “Install”:

User Name: <HRZ-Account>@uni-frankfurt.de
Password: <HRZ-Passwort>

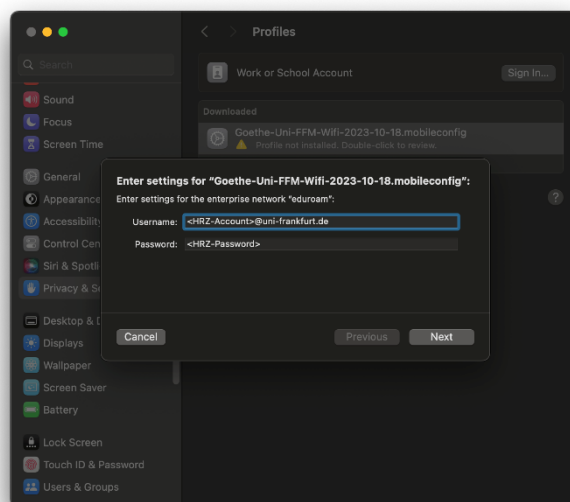


Figure 22 macOS User credentials eduroam

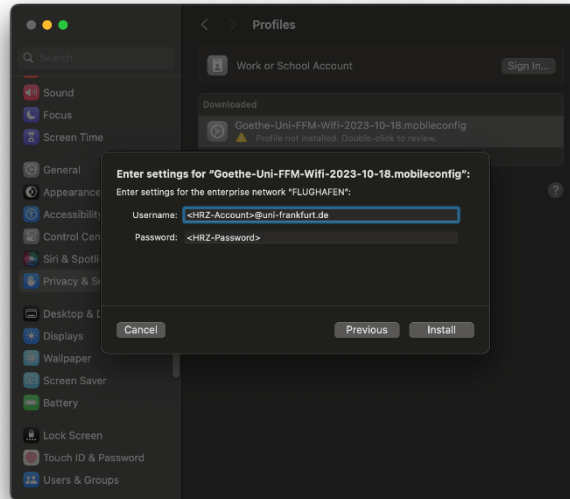


Figure 23 macOS User credentials FLUGHAFEN

- Click "Install" again.

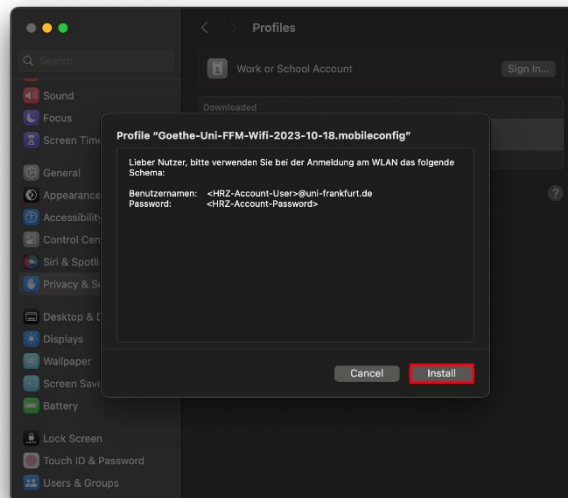


Figure 24 macOS Install profile

- The installation is completed.

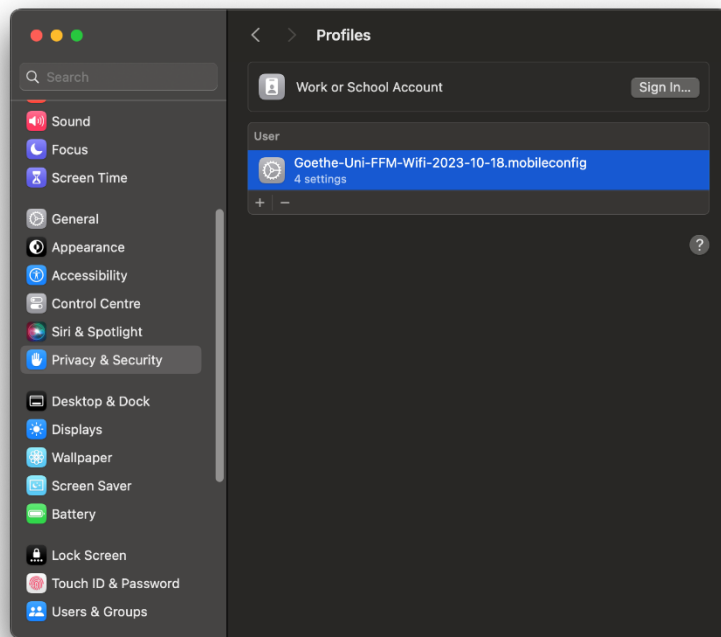


Figure 25 macOS Installation finished

Linux

Manuel version

Due to the amount of variations of GUIs and configuration files, we can only provide basic information, but unfortunately no in-depth support. We would still like to ask you to set up your device as safely as possible.

SSID	eduroam
Security type	WPA2-Enterprise
Encryption type	AES / CCMP
CA Certificate	USERTrust RSA Certification Authority
Outer / Anonymous Identity	eduroam@uni-frankfurt.de
Network authentication	PEAP
Inner authentication	MS-CHAPv2

Username	<HRZ-ACCOUNT-USER>
Password	<HRZ-ACCOUNT-PASSWORD>

RADIUS server	firlefanx.server.uni-frankfurt.de scheppekraus.server.uni-frankfurt.de doppelterdohmen.server.uni-frankfurt.de schaedelharry.server.uni-frankfurt.de unsermannauseinoed.server.uni-frankfurt.de
---------------	---

RADIUS server altSubjectName	DNS:doppelterdohmen.server.uni-frankfurt.de DNS:firlefanx.server.uni-frankfurt.de DNS:schaedelharry.server.uni-frankfurt.de DNS:scheppekraus.server.uni-frankfurt.de DNS:unsermannauseinoed.server.uni-frankfurt.de
------------------------------	---

As you can see in the example of Ubuntu 18.04.2, not everything can be configured in it.

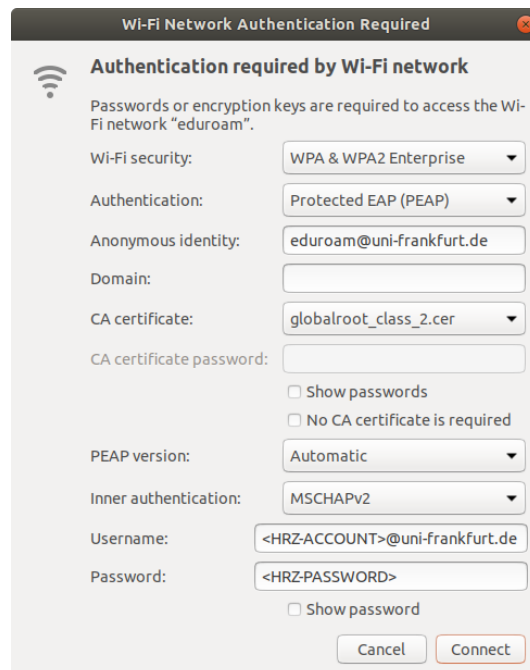


Figure 26 Ubuntu manuel

iOS

Configuration file

- Download and run [Goethe-Uni-FFM-Wifi.mobileconfig](#).
From iOS 12.1.1 onward, the profile installation must be started manually via Settings.

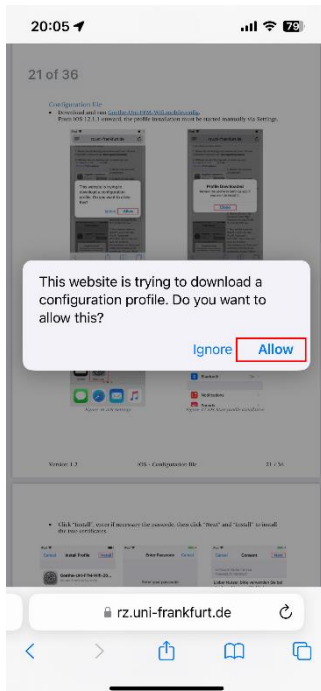


Figure 27 iOS Download profile

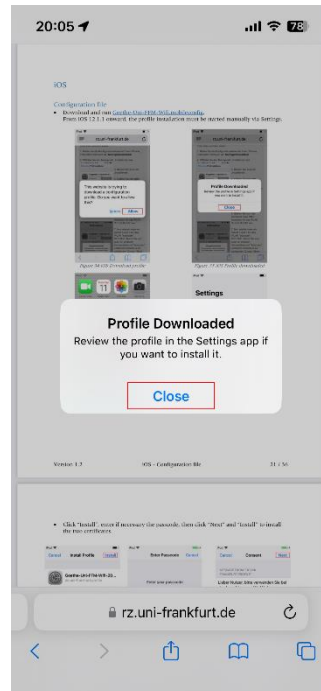


Figure 28 iOS Profile downloaded

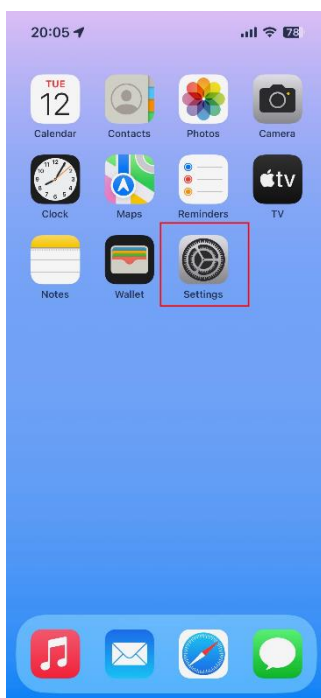


Figure 29 iOS Settings

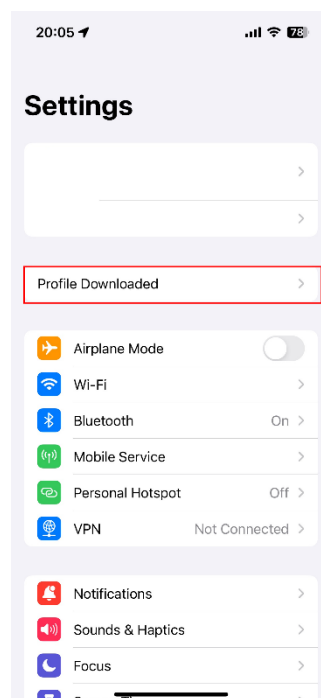


Figure 30 iOS Start profile installation

- Click “Install”, enter if necessary the passcode, then click “Next” and “Install” to install the two certificates.

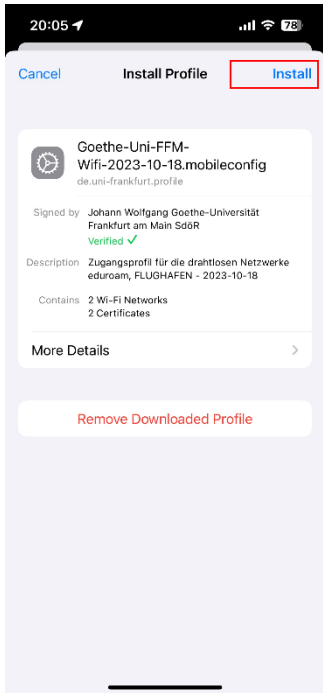


Figure 31 iOS Profile installation

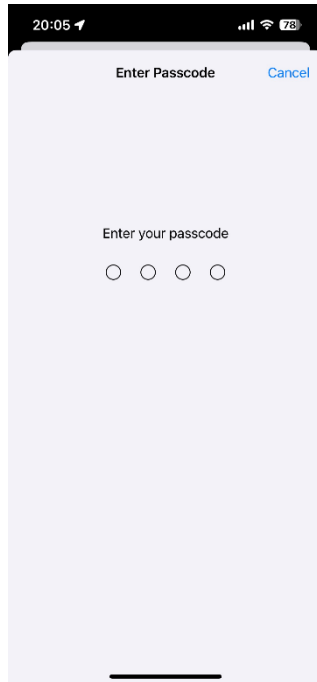


Figure 32 iOS Passcode

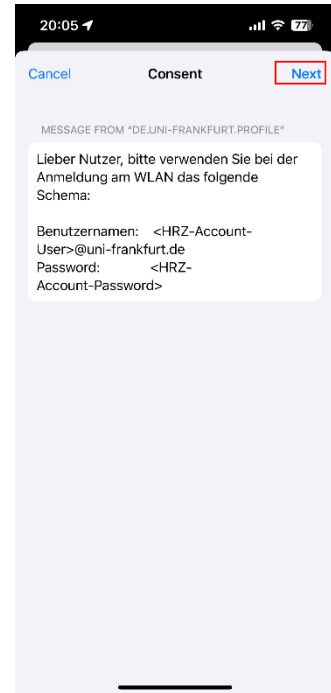


Figure 33 iOS Consent

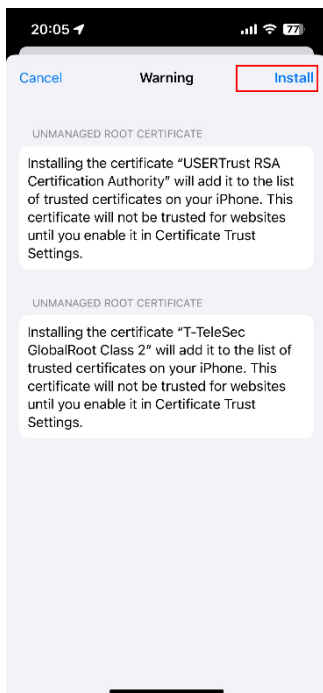


Figure 34 iOS Install certificate

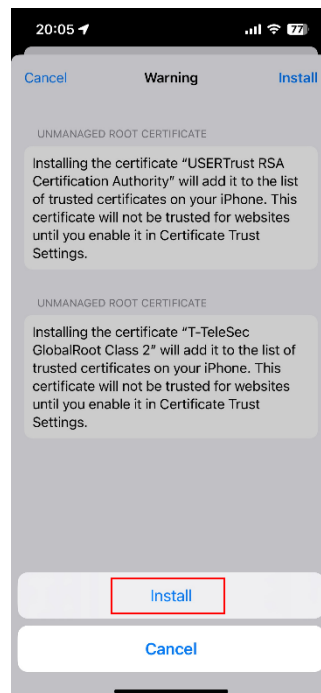


Figure 35 iOS Install certificate confirmation

- Enter your user credentials:

User Name: <HRZ-Account>@uni-frankfurt.de

Password: <HRZ-Password>

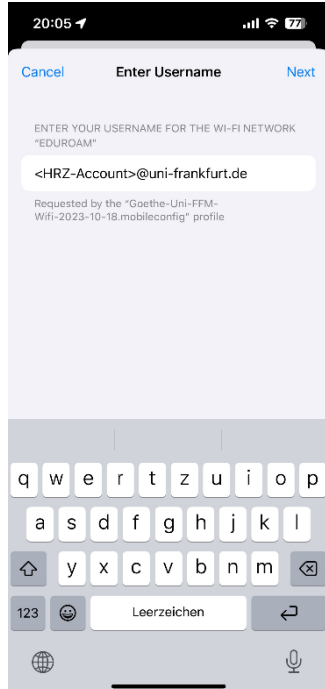


Figure 36 iOS FLUGHAFEN Username

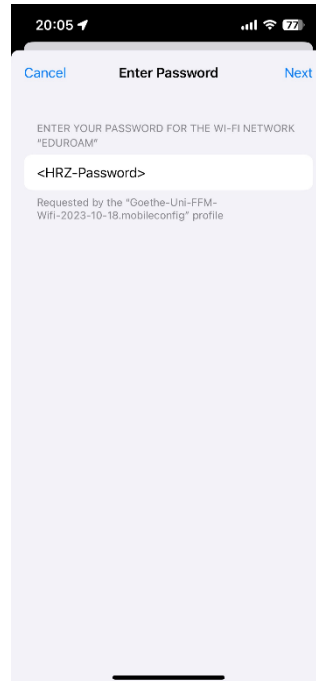


Figure 37 iOS FLUGHAFEN Password

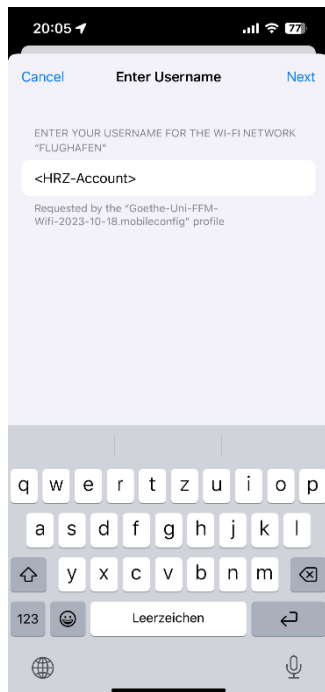


Figure 38 iOS eduroam Username

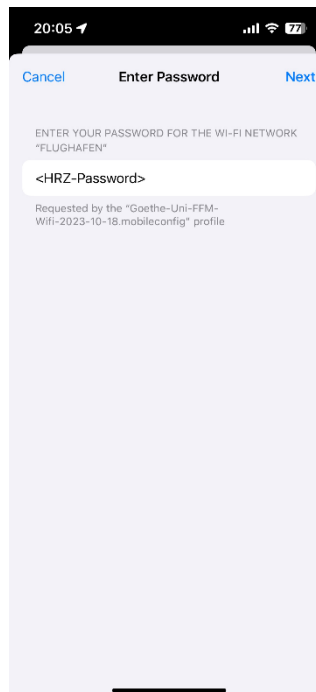


Figure 39 iOS eduroam Password

- The installation is complete, click “Done” to close it.

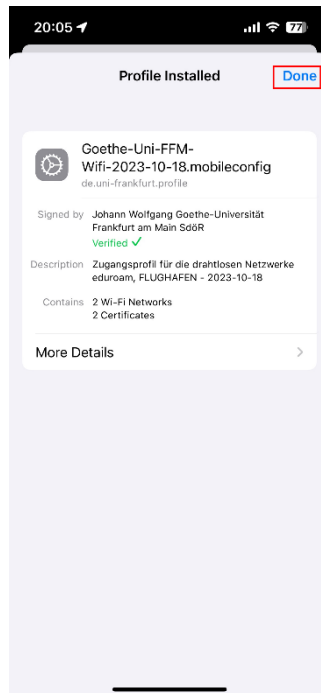


Figure 40 iOS Profile installed

Android

When setting up eduroam on an Android device, a distinction must be made as to whether the device is operated with Android 13 and lower or with Android 14 and higher. The geteduroam app does not yet support Android 14 at the time of writing this document.

[Android 13 and lower \(geteduroam\)](#)

[Android 14 and higher / Manuel installation](#)

Android 13 and lower (geteduroam)

- Install the [geteduroam](#) app from the Google Play Store and open it.

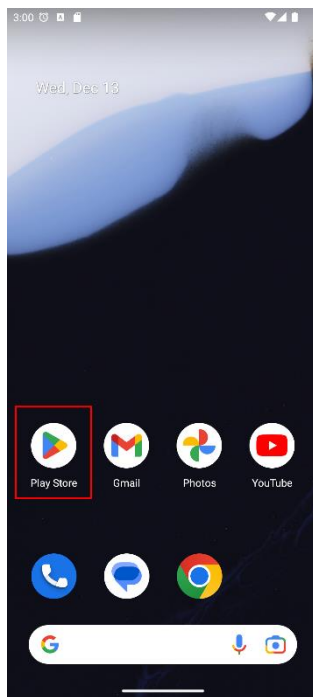


Figure 41 Play Store

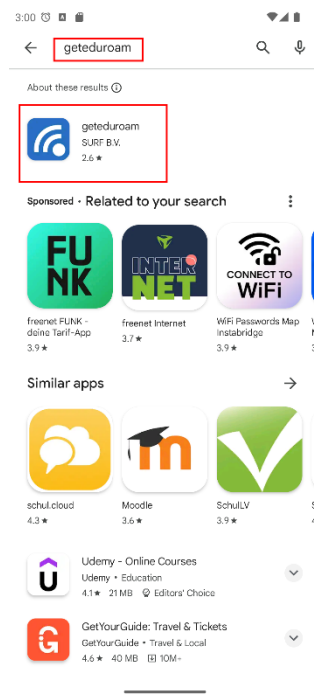


Figure 42 Search geteduroam

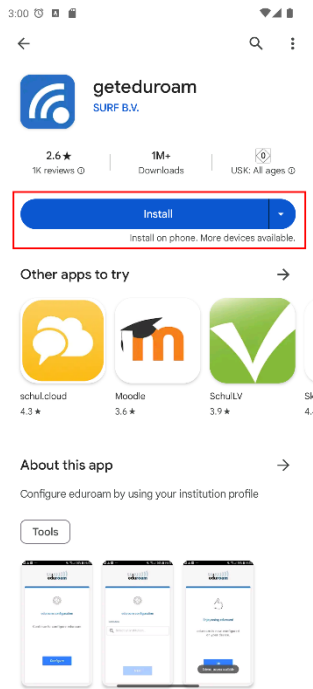


Figure 43 Install geteduroam

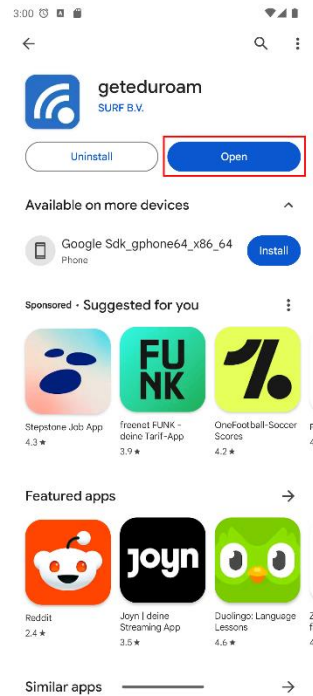


Figure 44 Open geteduroam

- Search for “Johann Wolfgang Goethe-Universität Frankfurt am Main” and select the entry.

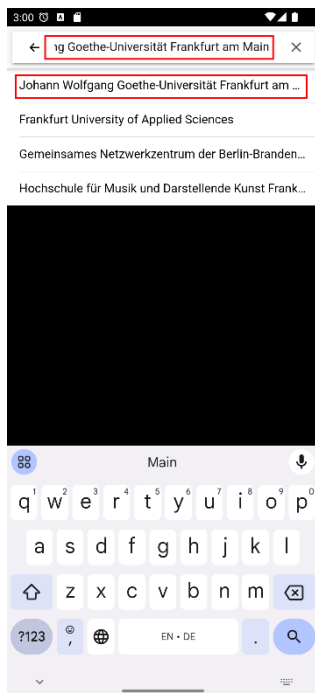


Figure 45 geteduroam search

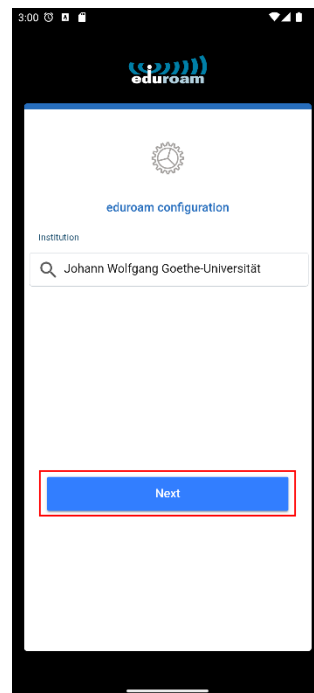


Figure 46 geteduroam selection

- Enter your user credentials and save the networks:

User Name: <HRZ-Account>@uni-frankfurt.de

Password: <HRZ-Password>

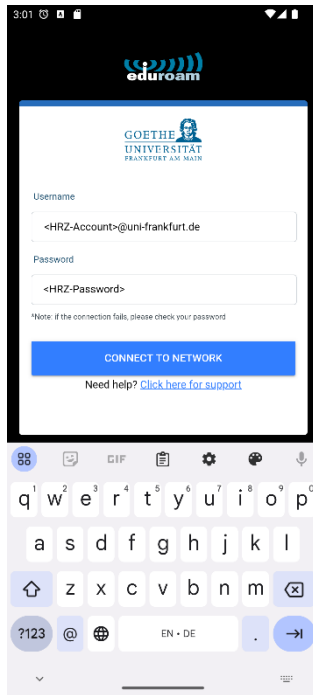


Figure 47 geteduroam credentials

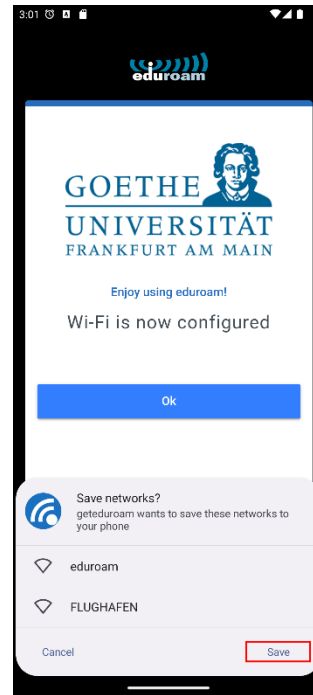


Figure 48 geteduroam save network

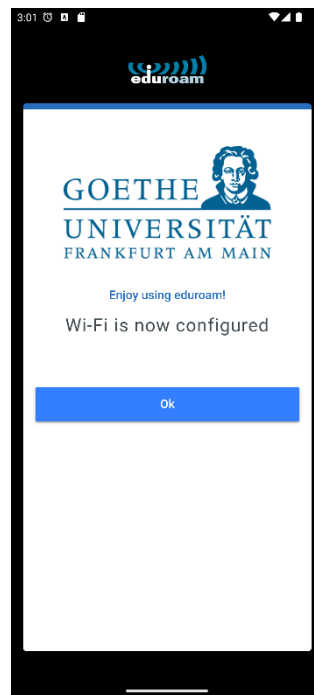


Figure 49 geteduroam erfolgreich

Manuel installation / Android 14

Before you start, note that this option is not as secure as the configuration with the geteduroam tool. You can't manually edit all the settings. However, it is currently the only way to set up eduroam for Android 14.

- First download the root certificate [USERTrust RSA Certification Authority](#) onto your Android device.

You can either follow the link above or use the following QR code. Hold the camera app via the QR code and at the bottom appears the ability to follow the same link as above. Download the certificate.



Figure 50 QR-Code USERTrust RSA Certification Authority

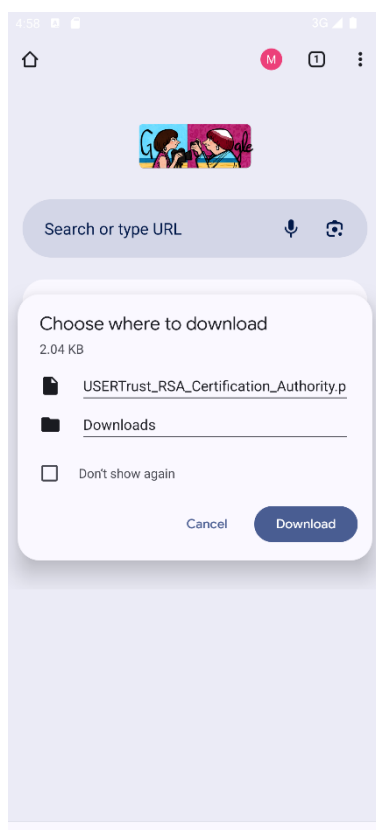


Figure 51 Download CA certificate

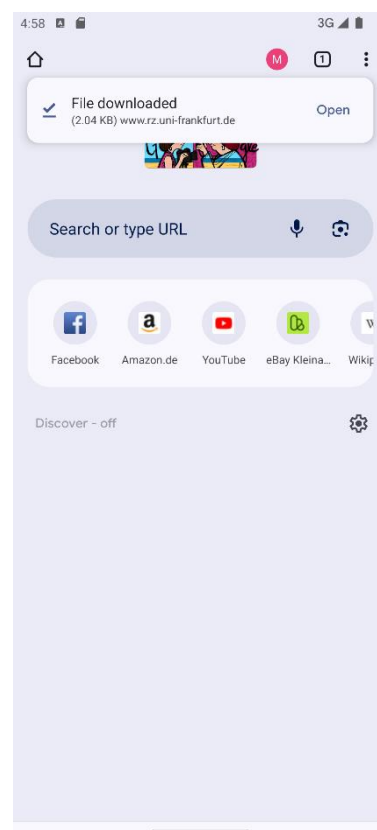


Figure 52 CA certificate downloaded

- Then the network can be configured via Settings → Network & Internet → WI-FI → Add network.

EAP method	PEAP
Phase 2 authentication	MS-CHAP v2
CA certificate	The newly downloaded certificate
Domain	uni-frankfurt.de
Identity	<HRZ-ACCOUNT>
Anonymous Identity	eduroam
Password	<HRZ-PASSWORD>

To use the downloaded certificate, you must install it the first time. The name for the certificate can be freely chosen.

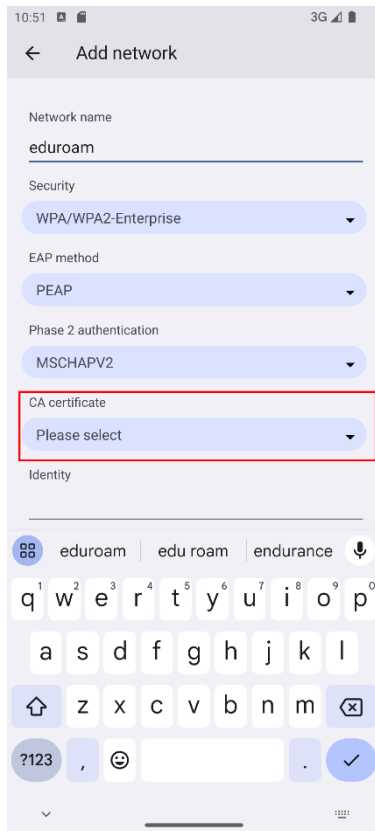


Figure 53 Choose CA certificate

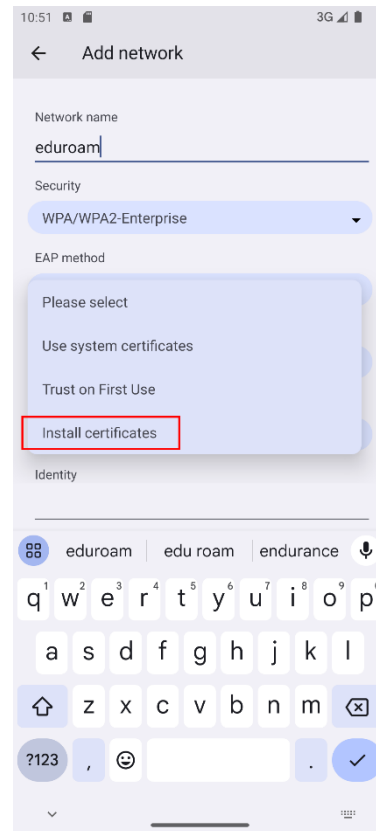


Figure 54 Install CA certificate

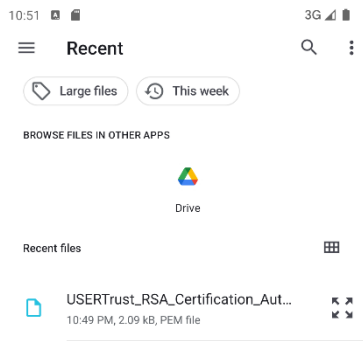


Figure 55 CA certificate file

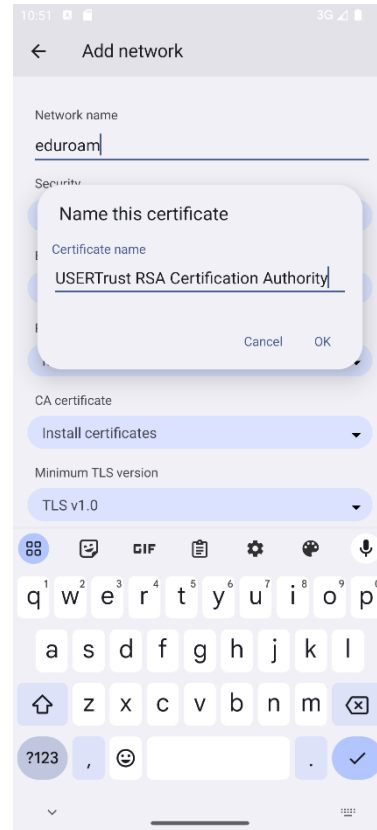


Figure 56 CA certificate name

The final settings should look like this.

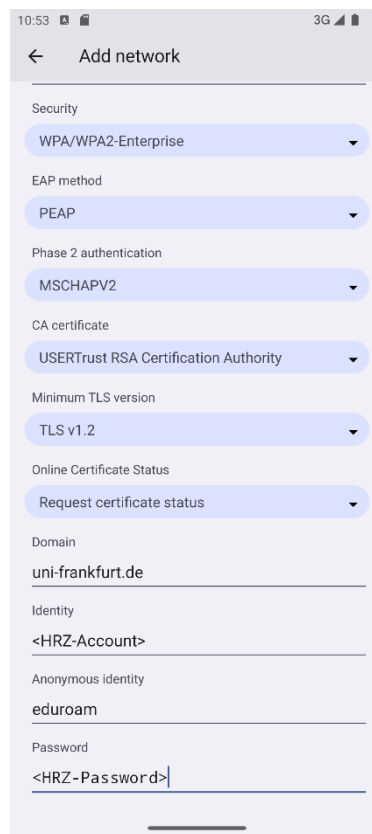


Figure 57 eduroam configuration

FLUGHAFEN

The setup of eduroam and FLUGHAFEN are identical. Just replace the network name eduroam with FLUGAHFEN.

QR-Codes

Goethe-PEAP.exe



Figure 58 QR-Code Goethe-PEAP.exe

iOS- / Mac OSX- Configuration file



Figure 59 QR-Code mobileconfig

Android geteduroam



Figure 60 QR-Code geteduroam app